



QL SERVER 2.0 SETUP

Version 1.0

Created on March 20, 2017

Please follow step by step the below described procedure.

1. PRE-INSTALLATION WINDOWS SERVER SETUP:

MICROSOFT SQL SERVER SETUP:

Navori QL requires Microsoft SQL Server, in either Express or commercial versions.

If you want to use an existing SQL Server (must be at least SQL 2008 R2), please skip this section and go directly to the chapter 2.

Otherwise, you will need to install Microsoft SQL Server.

The version of SQL must be compatible with the Windows version of the server.

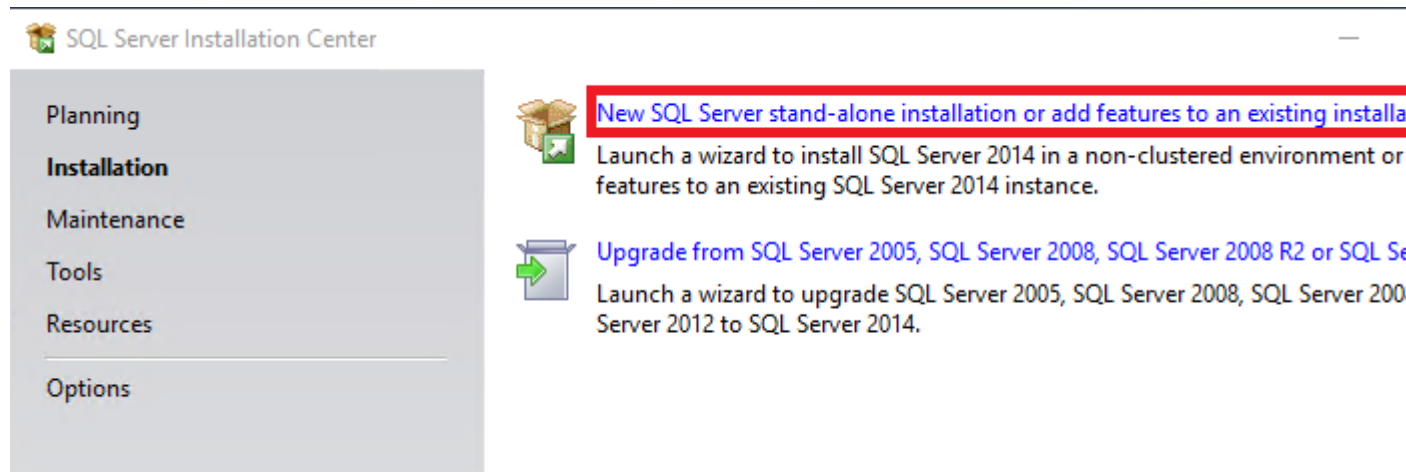
Windows server 2008 R2 or Windows 7 pro: use [SQL server 2008 R2](#)

Windows Server 2012 or Windows 10 pro : use SQL server [2012](#) or [2014](#)

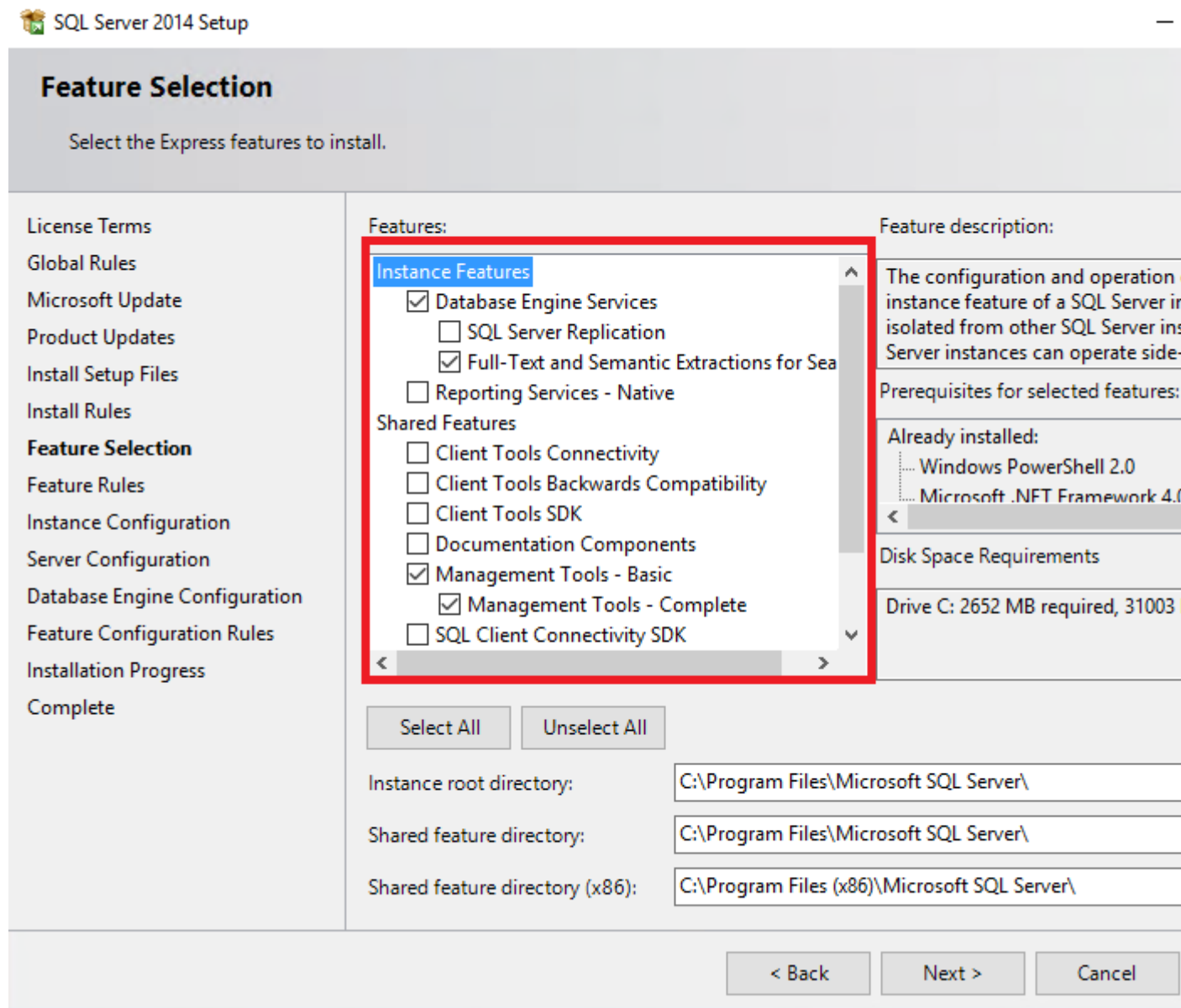
Windows Server 2016: use [SQL Server 2016](#)

If you go for Microsoft SQL Express, please use the download links above. These are links to SQL Express with Advanced Services. Microsoft SQL Server can be installed on the same PC on which you are installing Navori QL Server, or it can be installed on a remote PC.

Launch the Installer, click “New SQL Server Stand-alone installation or add features to an existing installation”.



Select the features as per the screenshot below:





Depending of your Windows version, you may get the following message:

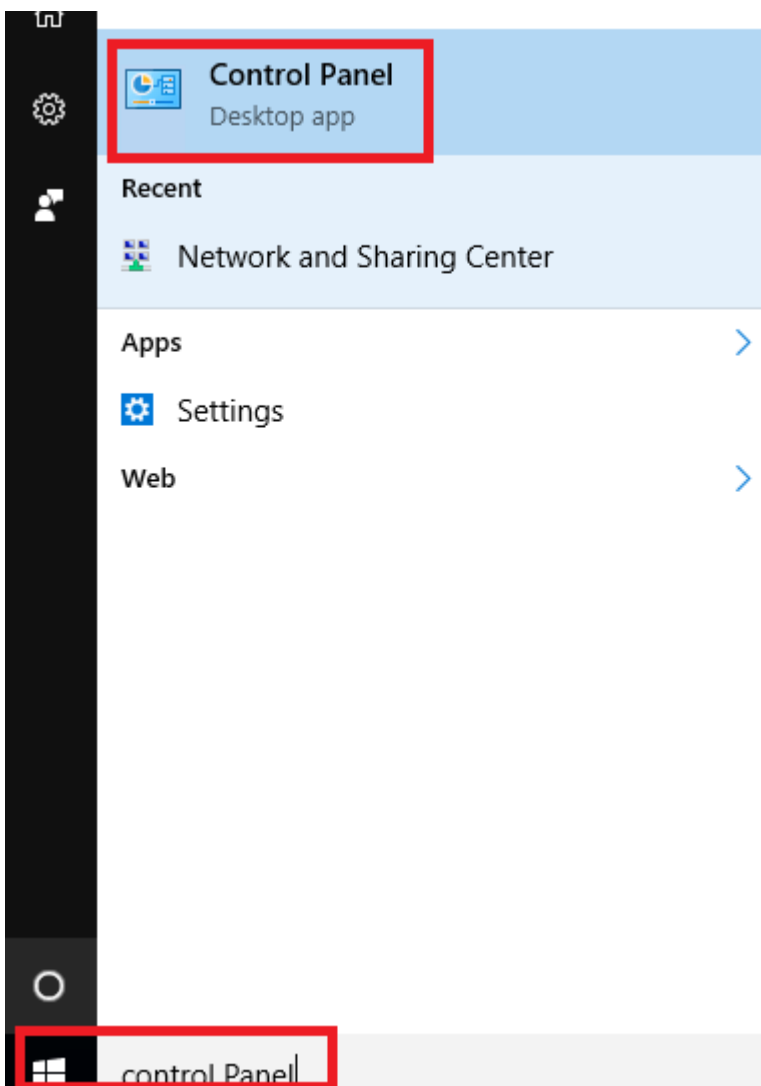
Operation completed. Passed: 1. Failed 1. Warning 0. Skipped 0.

Hide details << Re-run

[View detailed report](#)

Rule	Status
 Prior Visual Studio 2010 instances requiring update.	Passed
 Microsoft .NET Framework 3.5 Service Pack 1 is required	Failed

If so, you will need to install .NET Framework 3.5 Service pack 1. To do so, launch the Control panel and add the feature as per the screenshots below:



The screenshot shows the Windows Start menu search interface. The search results are displayed in a list. The top result is 'Control Panel', which is highlighted with a red box. Below it, under the 'Recent' section, is 'Network and Sharing Center'. Other results include 'Apps', 'Settings', and 'Web'. At the bottom of the search bar, the text 'control Panel' is visible, also highlighted with a red box.



Programs

[Uninstall a program](#)



Programs and Features

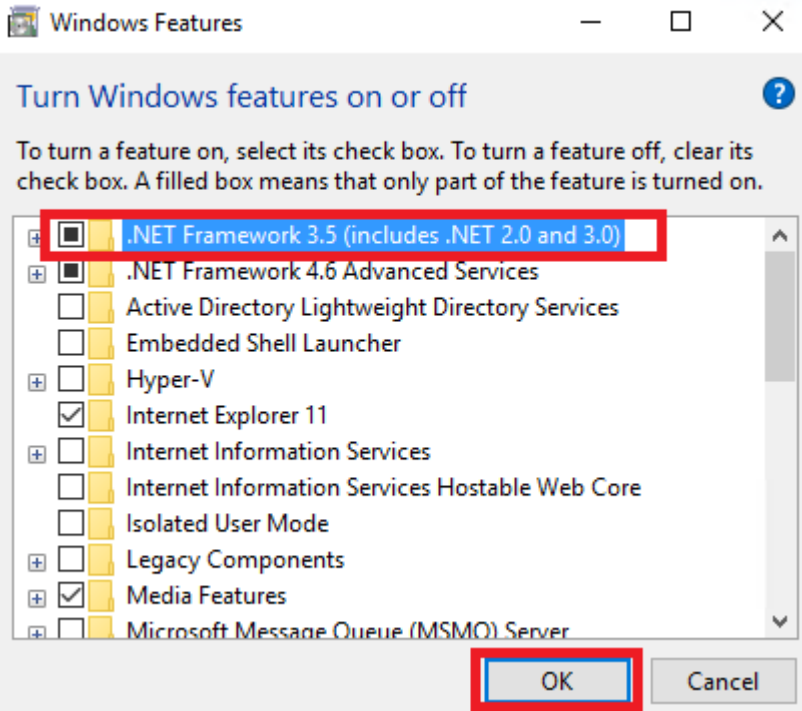
[Uninstall a program](#)

[Turn Windows features on or off](#)

[View installed updates](#)

[Run programs made for previous versions of Windows](#)

[How to install a program](#)



← Windows Features

Windows needs files from Windows Update to finish installing some features.

→ Download files from Windows Update

→ Don't connect to Windows Update
No changes will be made to your PC.



← Windows Features

Windows completed the requested changes.

Close

Then, go back to the SQL installer and re-run the test:

SQL Server 2014 Setup

Feature Rules

Setup is running rules to determine if the installation process will be blocked. For more information, click Help.

- License Terms
- Global Rules
- Microsoft Update
- Product Updates
- Install Setup Files
- Install Rules
- Feature Selection
- Feature Rules**
- Instance Configuration
- Server Configuration

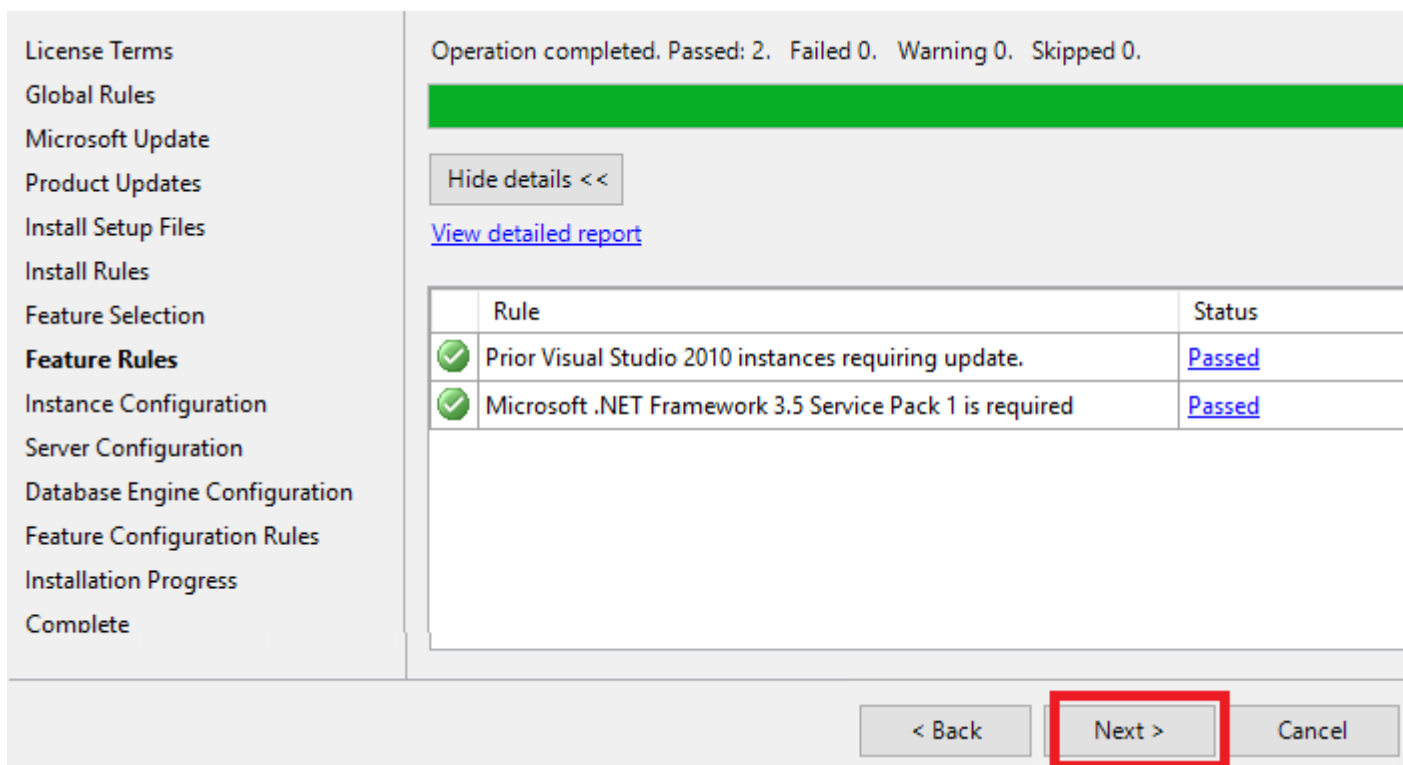
Operation completed. Passed: 1. Failed 1. Warning 0. Skipped 0.

Hide details <<

[View detailed report](#)

	Rule	Status
✓	Prior Visual Studio 2010 instances requiring update.	Passed
✗	Microsoft .NET Framework 3.5 Service Pack 1 is required	Failed

The test passed, click “Next”.



License Terms
Global Rules
Microsoft Update
Product Updates
Install Setup Files
Install Rules
Feature Selection
Feature Rules
Instance Configuration
Server Configuration
Database Engine Configuration
Feature Configuration Rules
Installation Progress
Complete

Operation completed. Passed: 2. Failed 0. Warning 0. Skipped 0.

Hide details <<

[View detailed report](#)

	Rule	Status
✓	Prior Visual Studio 2010 instances requiring update.	Passed
✓	Microsoft .NET Framework 3.5 Service Pack 1 is required	Passed

< Back **Next >** Cancel

At this step you need to select “Named Instance”. You can let the default name “SQLEXPRESS” or use any other name.

Specify the name and instance ID for the instance of SQL Server. Instance ID becomes part of the installation path.

Default instance
 Named instance:

Instance ID:

SQL Server directory: C:\Program Files\Microsoft SQL Server\MSSQL12.SQLEXPRESS

Installed instances:

Instance Name	Instance ID	Features	Edition	Ve

< Back **Next >** Cancel

Service Accounts Collation

Microsoft recommends that you use a separate account for each SQL Server service.

Service	Account Name	Password	Sta
SQL Server Database Engine	NT Service\MSSQLSSQL...		Aut
SQL Full-text Filter Daemon Launc...	NT Service\MSSQLFDLa...		Mar
SQL Server Browser	NT AUTHORITY\LOCAL ...		Disa

< Back **Next >** Cancel

Authentication mode: at this step, you need to select “Mixed mode”, **that is an important step**. Enter a password, that will be the password of the default “sa” SQL account.

Database Engine Configuration

Specify Database Engine authentication security mode, administrators and data directories.

License Terms
Global Rules
Microsoft Update
Product Updates
Install Setup Files
Install Rules
Feature Selection
Feature Rules
Instance Configuration
Server Configuration
Database Engine Configuration
Feature Configuration Rules
Installation Progress
Complete

Server Configuration | Data Directories | User Instances | FILESTREAM

Specify the authentication mode and administrators for the Database Engine.

Authentication Mode

Windows authentication mode

Mixed Mode (SQL Server authentication and Windows authentication)

Specify the password for the SQL Server system administrator (sa) account.

Enter password:

Confirm password:

Specify SQL Server administrators

TEST-INST-WIN10\Navori (Navori)

SQL Server administrators have unrestricted access to the Database Engine.

Add Current User | Add... | Remove

< Back | **Next >** | Cancel | Help

Complete

Your SQL Server 2014 installation completed successfully with product updates.

License Terms
Global Rules
Microsoft Update
Product Updates
Install Setup Files
Install Rules
Feature Selection
Feature Rules
Instance Configuration
Server Configuration
Database Engine Configuration
Feature Configuration Rules
Installation Progress
Complete

Information about the Setup operation or possible next steps:

Feature	Status
✓ Management Tools - Complete	Succeeded
✓ Management Tools - Basic	Succeeded
✓ Database Engine Services	Succeeded
✓ Full-Text and Semantic Extractions for Search	Succeeded
✓ SQL Browser	Succeeded
✓ SQL Writer	Succeeded

Details:

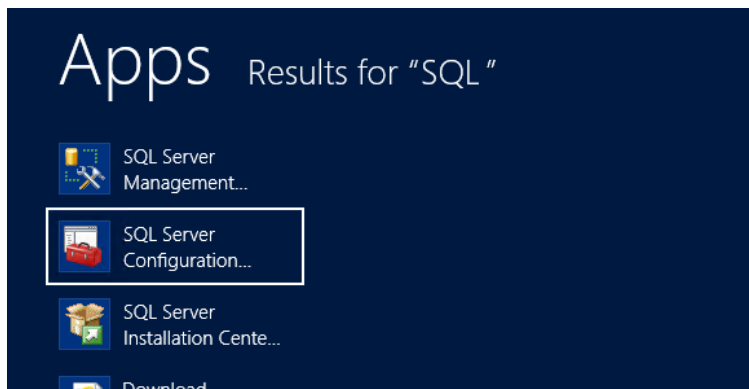
Viewing Product Documentation for SQL Server

Only the components that you use to view and manage the documentation for SQL Server have been installed. By default, the Help Viewer component uses the online library. After installing SQL Server, you can use the Help Library Manager component to download documentation to your local computer. For more information, see Use Microsoft Books Online for SQL Server (<<http://go.microsoft.com/fwlink/?LinkID=299578>>).

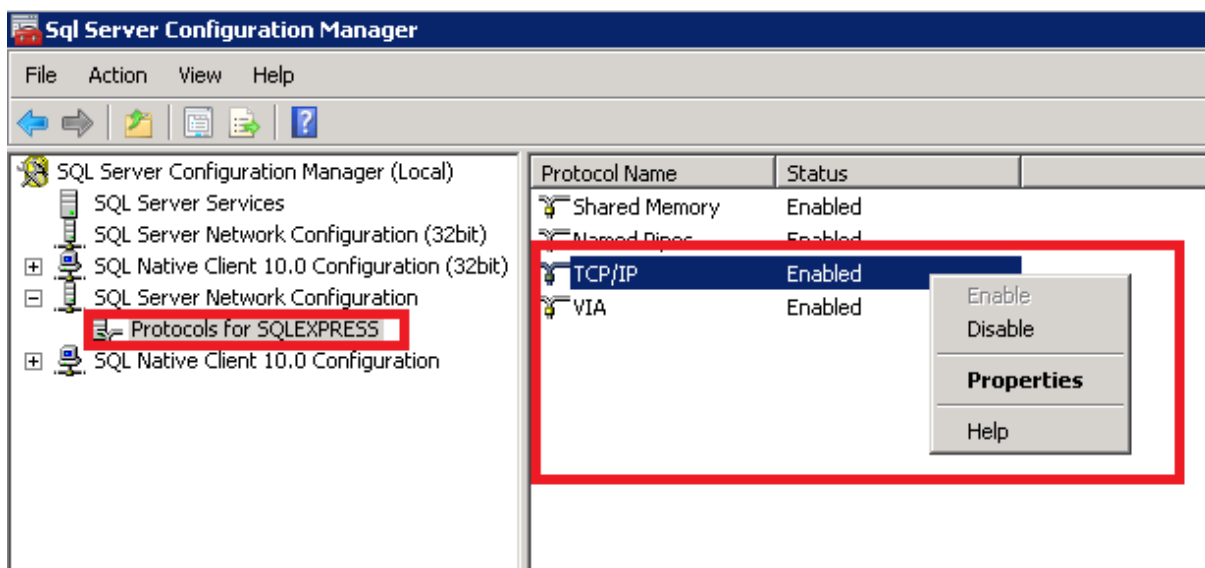
Close | Help

Microsoft SQL Server is now installed.
Now you need to create an SQL account, dedicated to Navori.

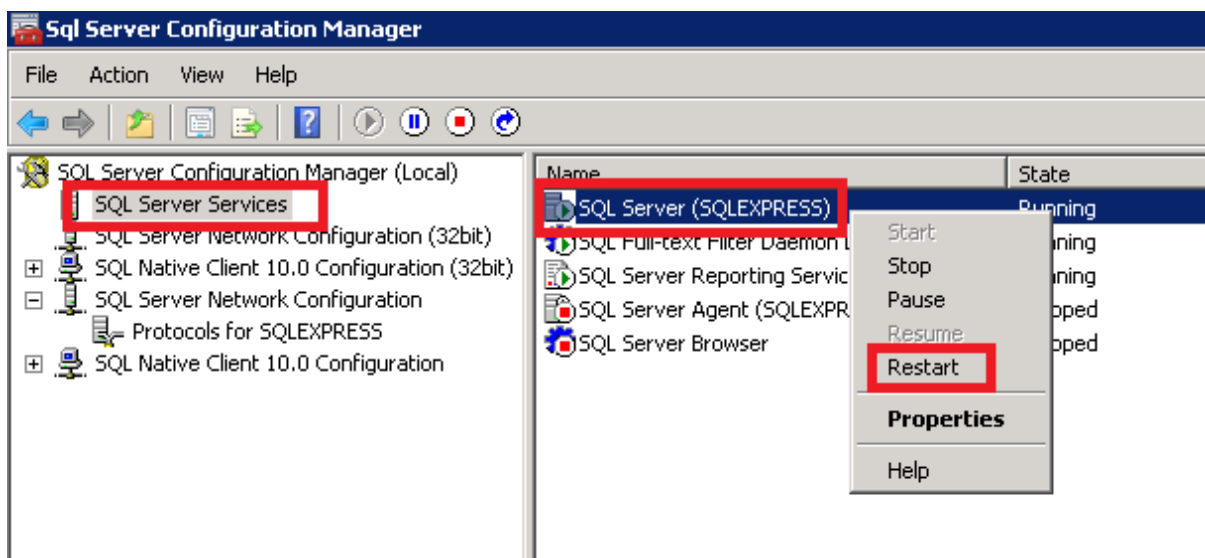
Launch SQL Server Configuration



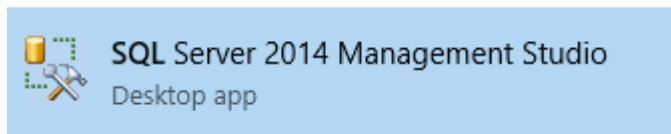
Enable TCP/IP and VIA protocols.



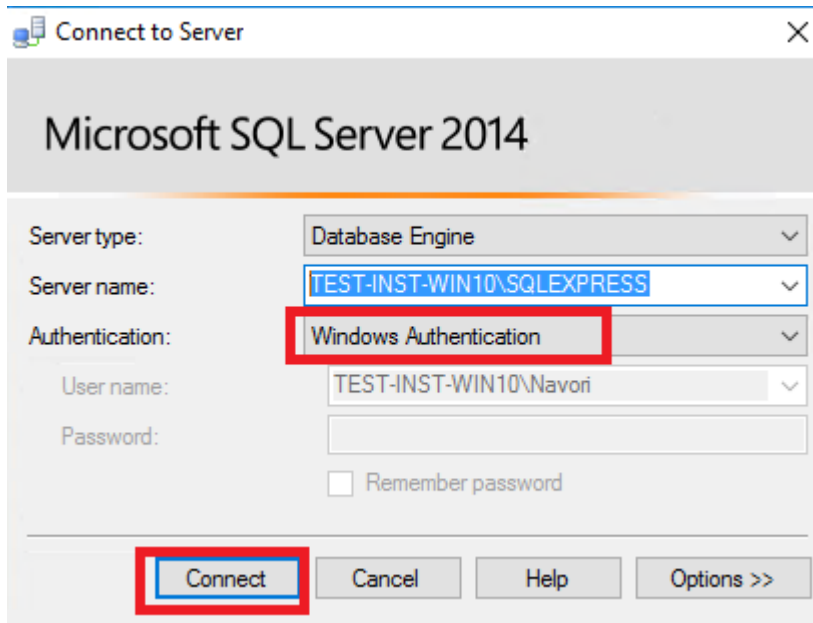
Restart SQL service.



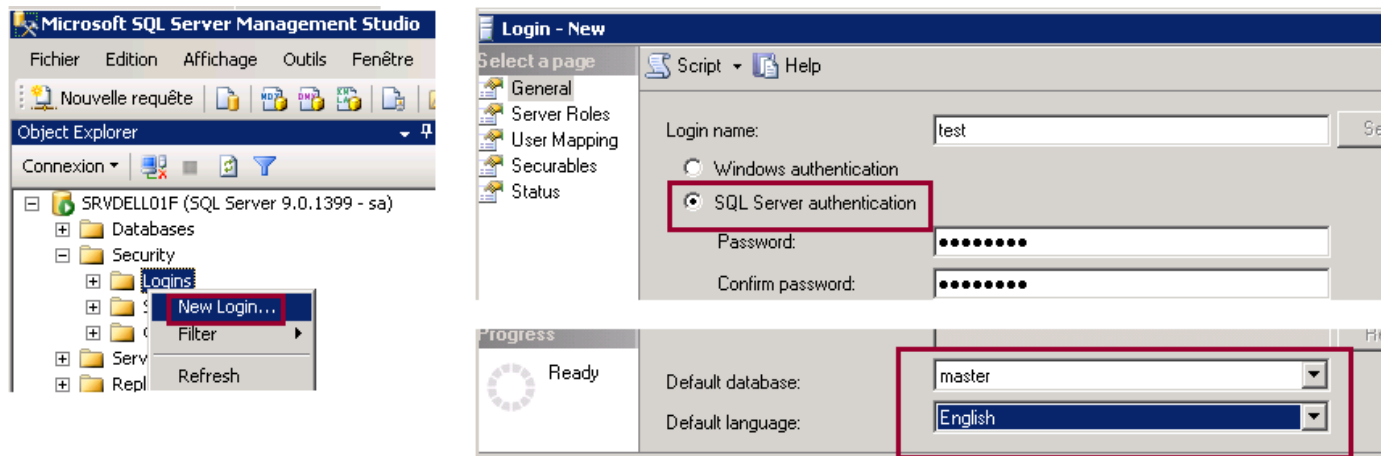
Launch SQL Management Studio program.



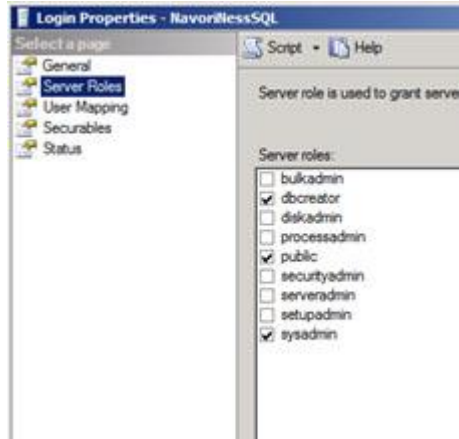
The server name should be correct by default. Select "Windows Authentication" and hit the "Connect" button.



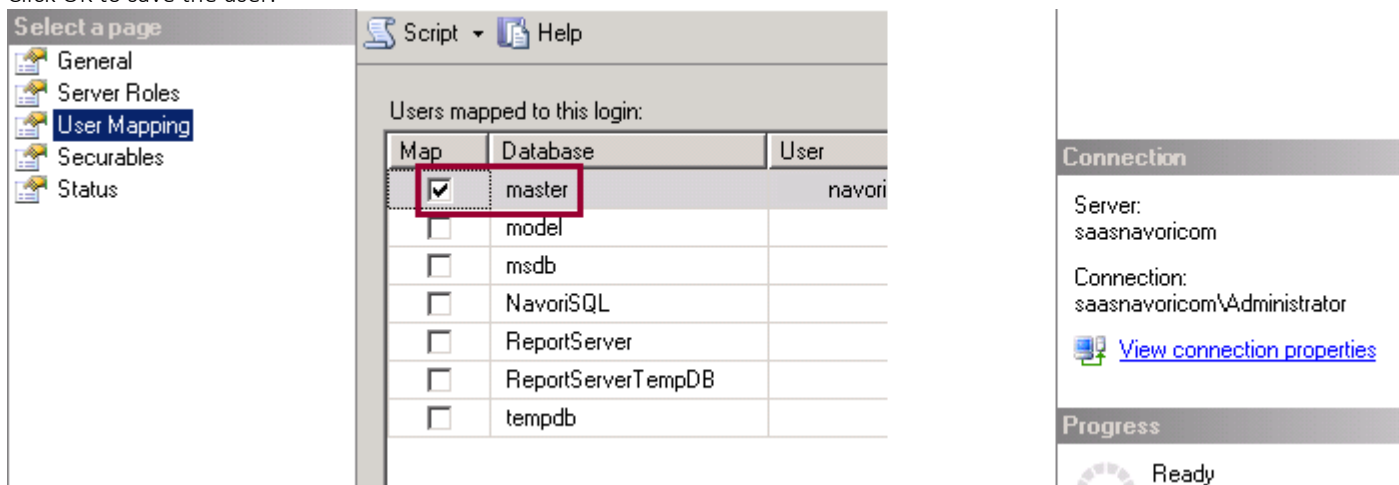
Once you are connected to your SQL server open the Security folder, right-click on **Logins** and select **New Login...** When creating your new login account, you must set it to **use SQL Server Authentication**. Un-check **Enforce password expiration** to prevent the password from expiring. Set the Default database to master and Default language to **English**.



Next, you must assign the **Server Roles** and **User Mappings** settings. Under **Server Roles**, select dbcreator, public and sysadmin.

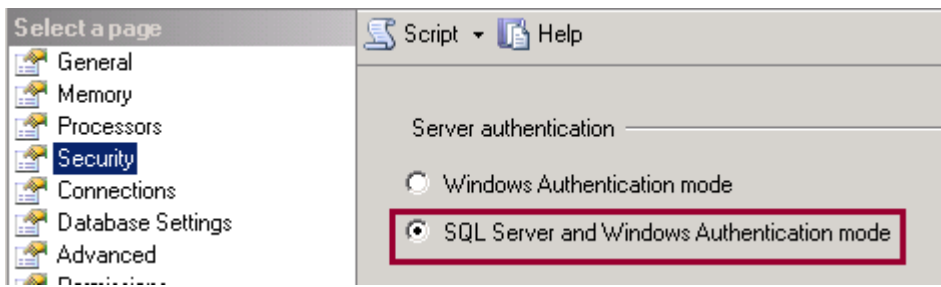


Under **User Mapping** select Master in the top pane and db_accessadmin, db owner and public in the bottom panel. Click OK to save the user.



When you have completed creating this login account, your SQL Server will be ready to use. Test out your new SQL login user by connecting to the SQL Server using SQL Server Management Studio and the new login account.

If the connection fails, make sure your SQL Server is configured to accept both authentication modes. To check this open the Server > Properties and go to the Security tab.



Under Server Authentication, make sure to select SQL Server and Windows Authentication mode. Restart SQL Server.

Try connecting to your SQL server using the new Login account again to confirm that it works.

The next section describes how to configure Microsoft IIS server so it can be used with Navori QL Server.

Special considerations for SQL Server in a DMZ

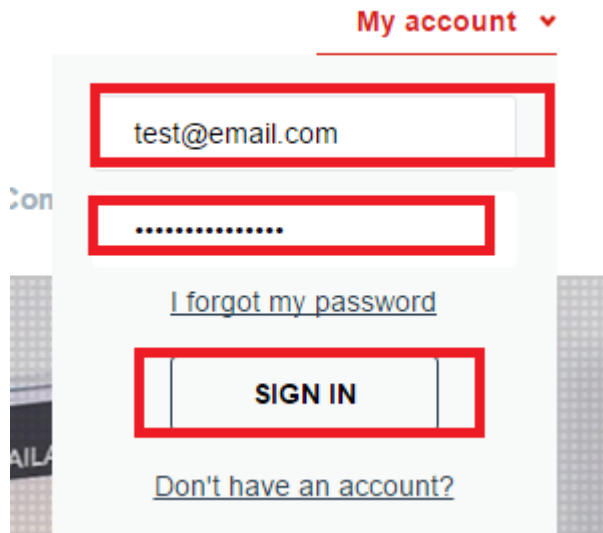
By default, Navori QL looks to access the SQL Server via a name and not an IP address.

If your SQL Server installation is set up so that the SQL Server Name corresponds to an "IP:Port Number" (such as is the case in a DMZ for example) you must enter the address as in the following example: 10.2.230.4,5000 (substitute the example IP address and port number with your installation IP and port).

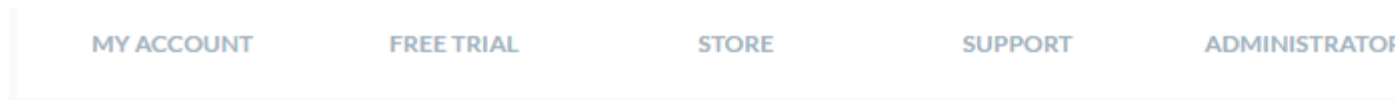
Note that you must separate the IP address from the port number using a comma (,) and not a semicolon (:).

2. QL SERVER 2.0 INSTALLATION:

First, you will need to download the QL Server installer from your Navori Extranet account. To do so, login to your account from <https://navori.com>



Once you are logged, you will see a list of your server licenses in the “Licenses” section. Click the “QL Server Full Installer” link to download the latest QL Server installer (don’t use an older version).



Trial

Contact Navori Sales

Licenses

test (1 Players)	Self Hosted	07/11/2013	Navori
test (1 Players)	Self Hosted	06/27/2013	NAVORI SA

11.1. Relationship of the Parties. The parties are independent contractor: partnership, franchise, joint venture, agency, fiduciary or employment re.

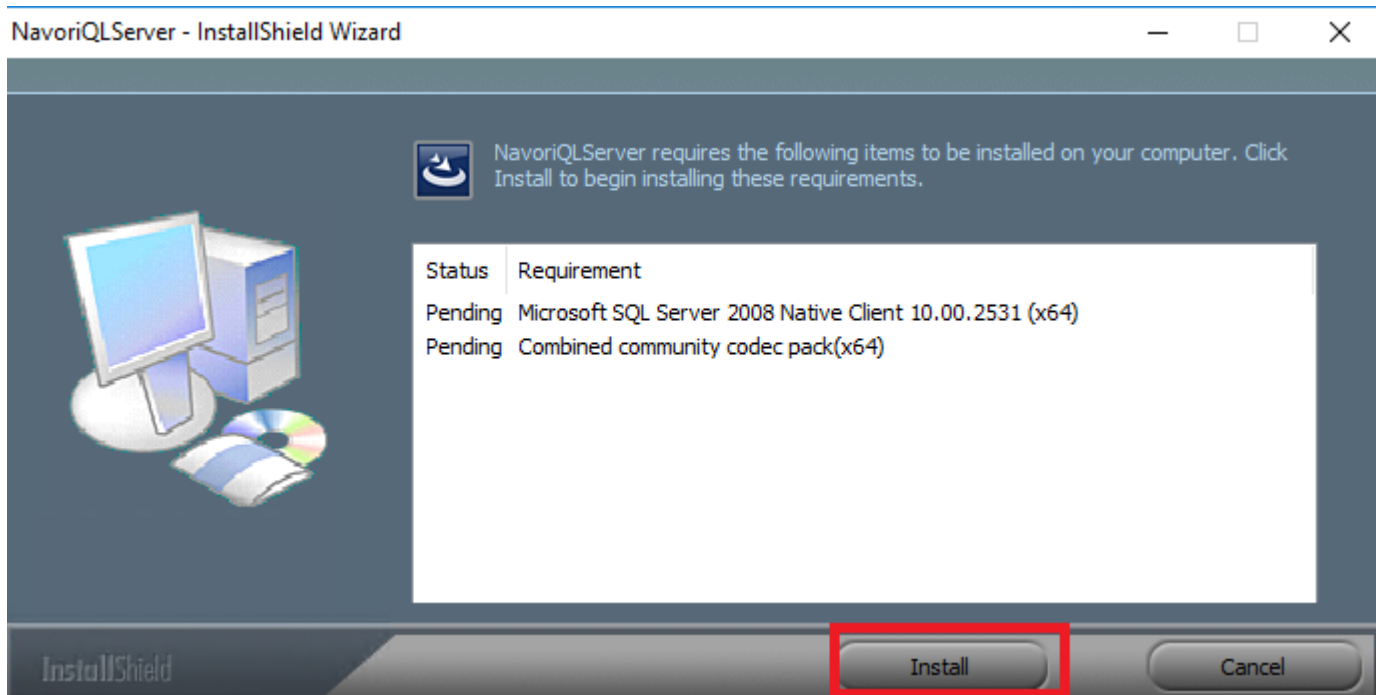
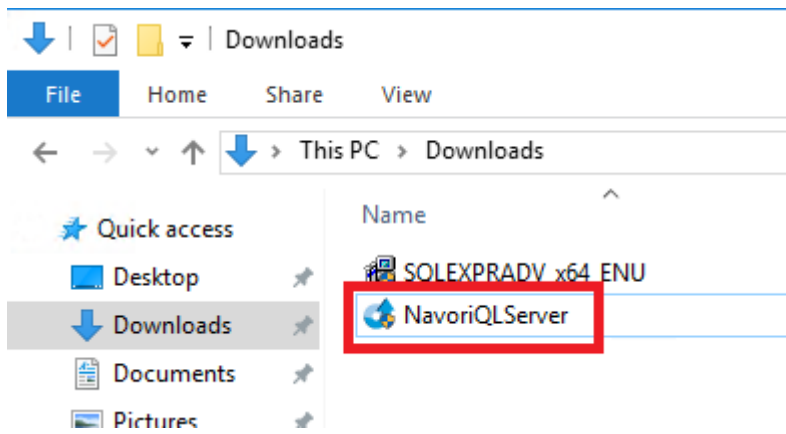
11.2. Waiver and Cumulative Remedies. No failure or delay by either party Agreement shall constitute a waiver of that right. Other than as expressly provided herein and in addition to, and not exclusive of, any other remed

I accept the terms of the license agreement

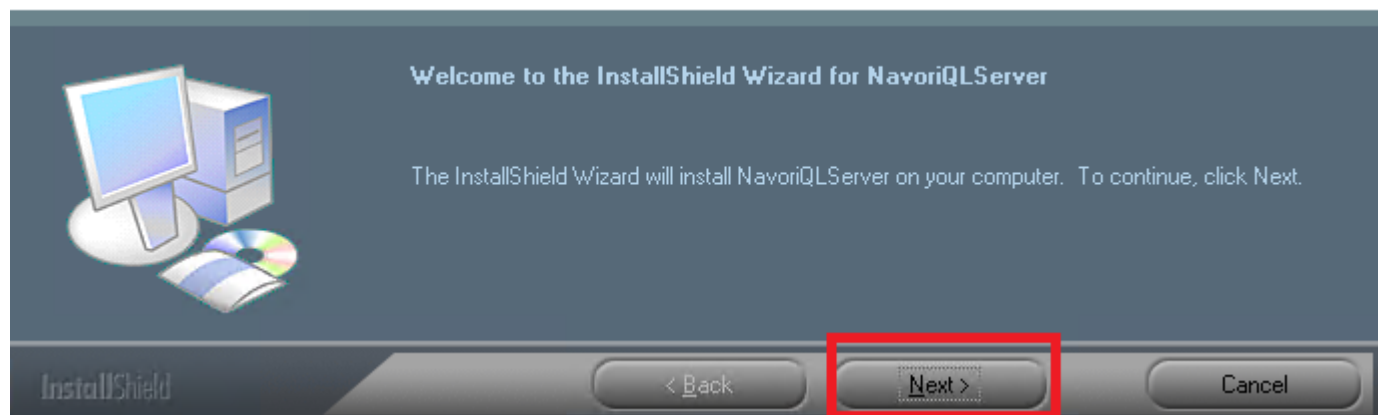
Download

Close

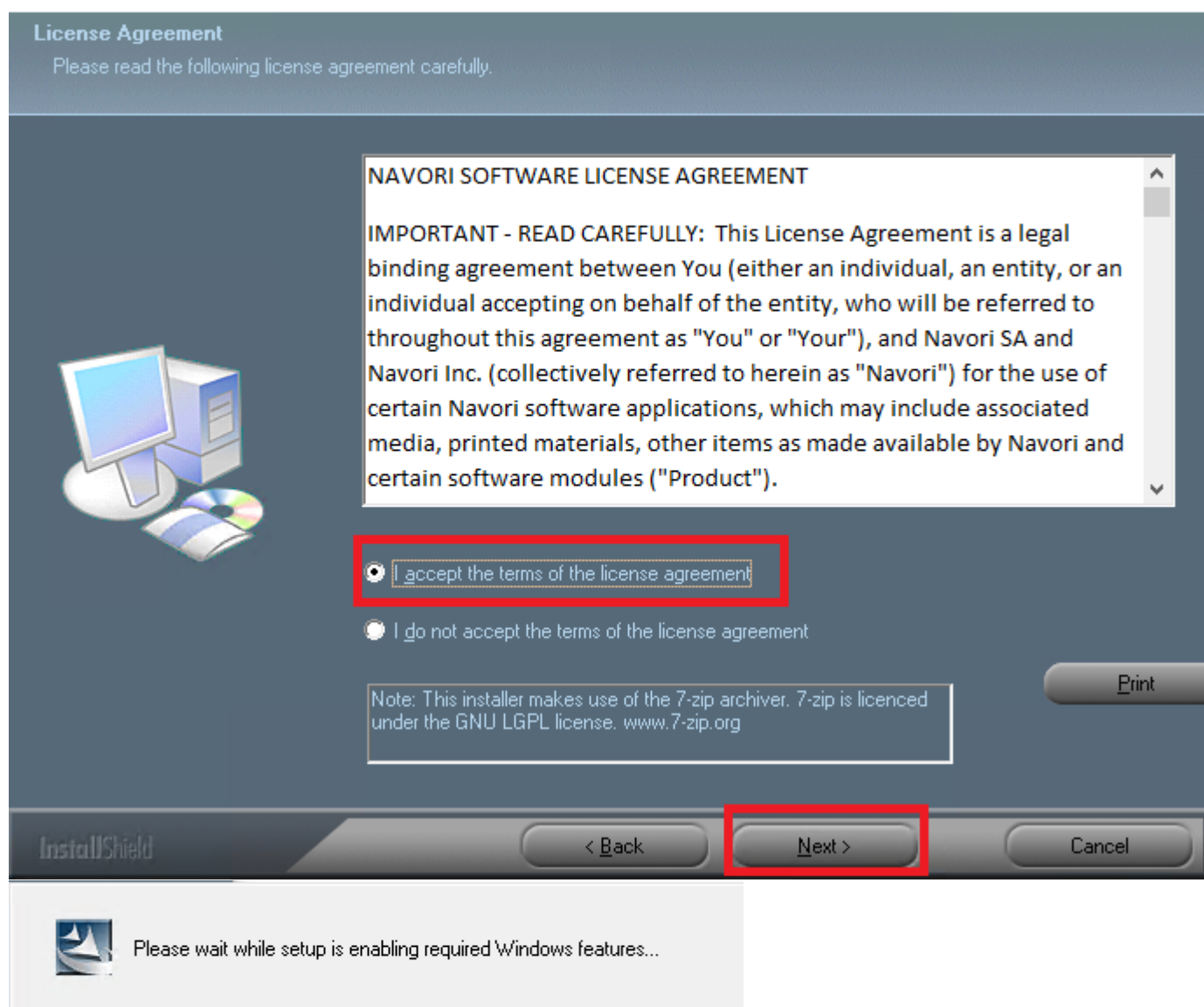
Launch the installer (using right click > run as Administrator) and follow the steps.



NavoriQLServer - InstallShield Wizard

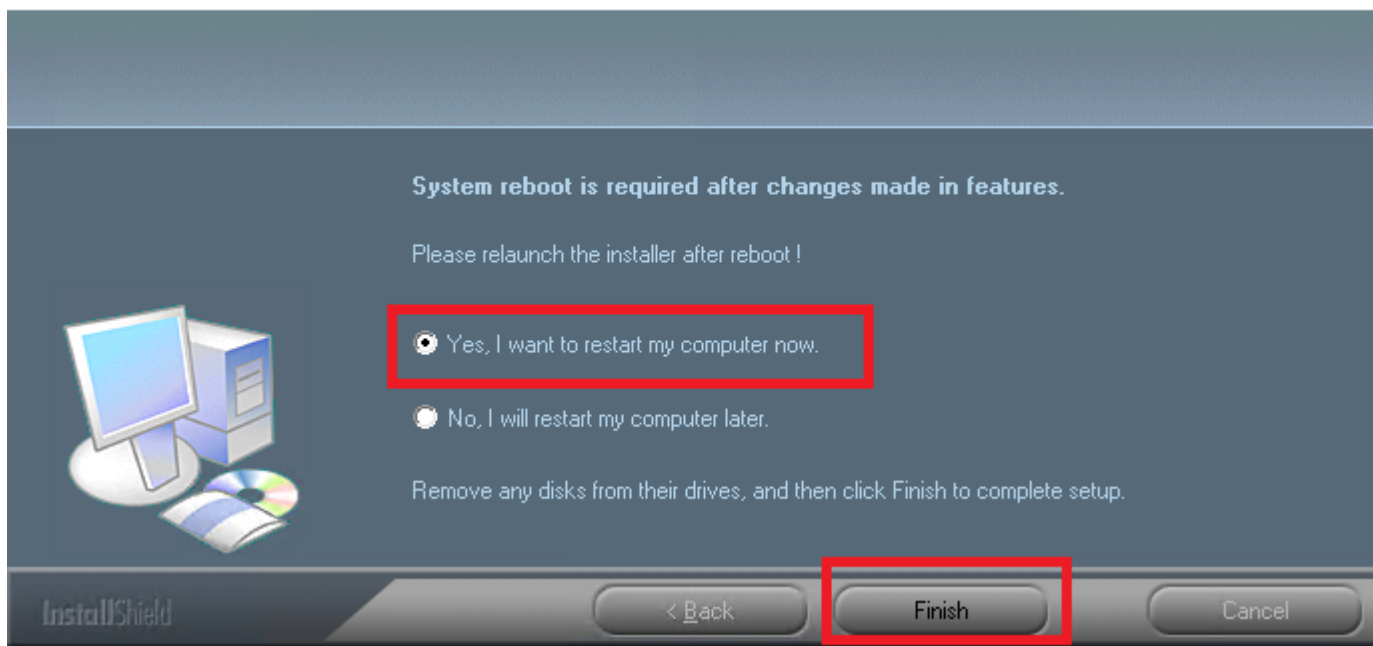


NavoriQLServer - InstallShield Wizard



At some point you will need to reboot the machine.

NavoriQLServer - InstallShield Wizard



Following PC reboot, start the installer one more time.

First you must check the internet connection. The installer needs it to activate the license.

If needed, you can enter proxy information.

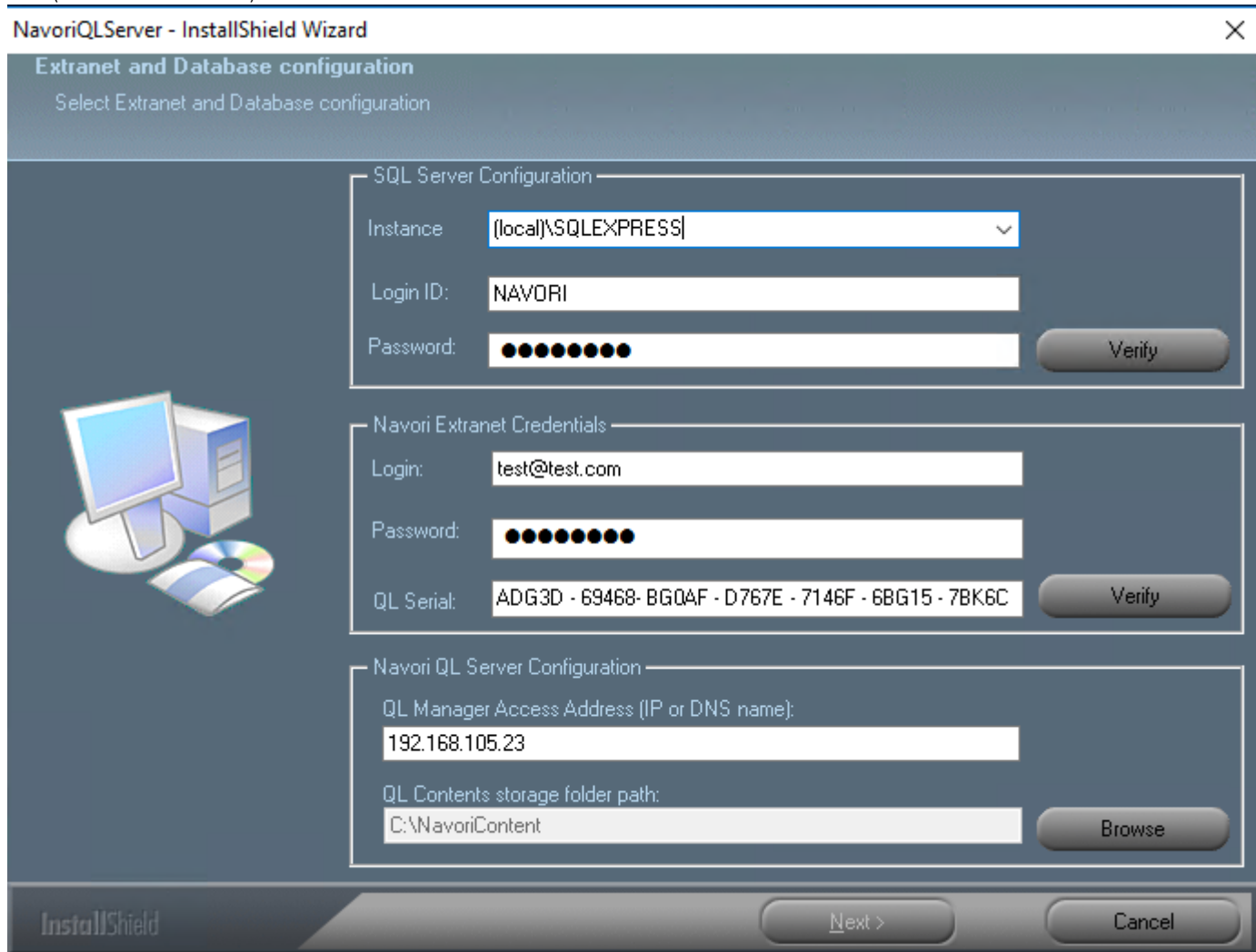
Then you will need to enter some information.

SQL Server: the installer will automatically retrieve the local instance, but you can enter other values, for example if the SQL server is installed on another server. Enter the username and password of the SQL user you created previously. Hit the "verify" button.

Navori Extranet Credentials: enter your Navori account credentials, and copy paste the serial number from the delivery note. Hit the "verify" button.

Navori QL Server Configuration: enter the server address, and select a folder in which Navori will store its media

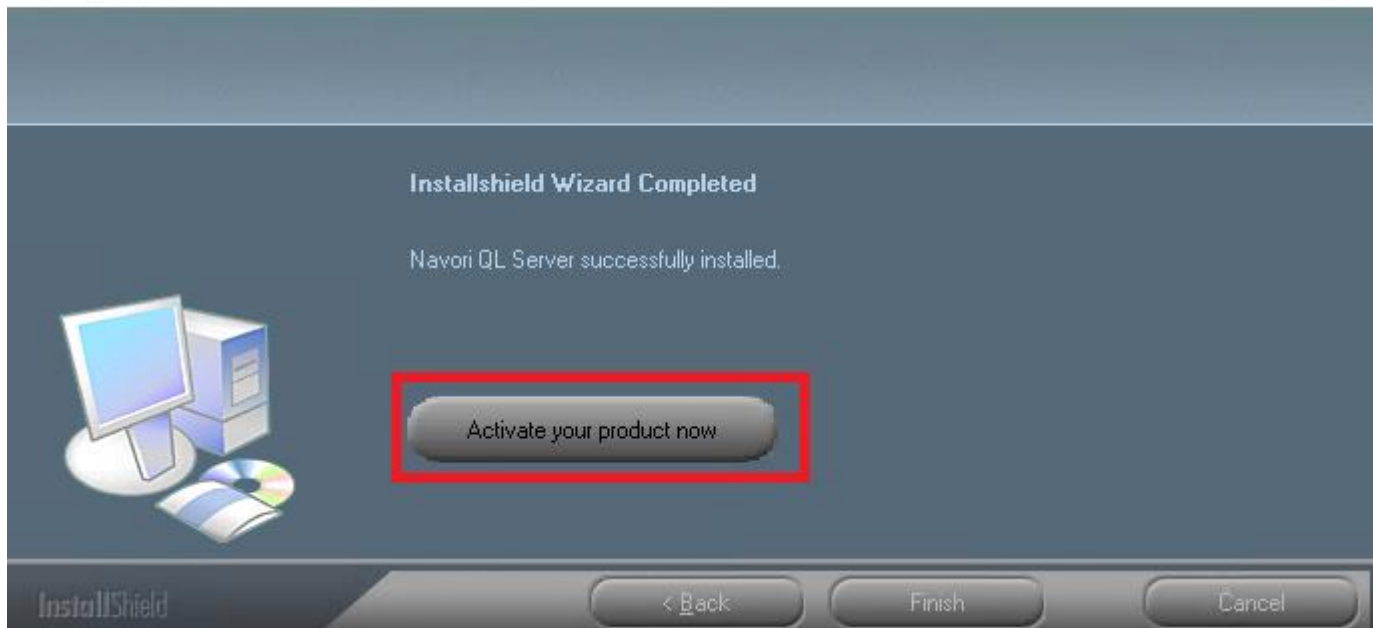
files (must be a local disk).



Hit the "Next" button.

When the installation is done, please activate the product license. **This step is not optional.**

NavoriQLServer - InstallShield Wizard



Upon successful license activation you will see the message “Product activated successfully”.

Leave the Run NavoriQLServer now box checked to automatically launch the application in your web browser.

Click the Finish button to close the installer.

If you left the Run NavoriQLServer now box checked Internet Explorer will launch and you will be presented with the QL Manager login page.

Navori QL Server is automatically configured with a default user account created from your Navori Extranet email address and password.

You will log into your QL Manager using your Navori Extranet credentials.

Default User Account

The installer will create a default user account. This account has root administrative rights for this Server and is created using your Navori Extranet credentials (email address and password). You must login with this account to perform any administrative duties.

Example: Let’s say your Navori Extranet login name is john.smith@yourcompany.com and your Navori Extranet password is: “lucky123”. Once you have completed your Navori QL Server installation you can log into your server using this account and you will have root administrator access.

When you type your login name and password into the QL Manager login screen, and press the Connection button, you will see a loading screen followed by the QL Manager application interface.

Login:

johnsmith@yourcompany.com

Password:

.....

ENGLISH ▼

Connection

Copyright Navori SA - Switzerland. All rights reserved.